



CAMISSA HOUSE
LUXURY BOUTIQUE HOTEL

Rack Rates 2026 / 2027

Rack Rates 2026/2027

ROOM TYPES	NO. OF UNITS	HIGH SEASON 1 Mar – 30 Apr 1 Sep – 19 Dec	LOW SEASON 1 May – 31 Aug	FESTIVE SEASON 20 Dec – 6 Jan 27	HIGH SEASON 7 Jan 27 – 28 Feb 27
Luxury	5	R 12 245	R 9 800	R 14 030	R 13 365
Luxury Terrace	3	R 14 630	R 11 710	R 16 760	R 15 970
Exclusive Use	8	R 93 925	R 70 860	R 113 555	R 102 520

PLEASE NOTE:

- Rates are quoted per room per night in South African Rand (ZAR), inclusive of Value Added Tax at 15% and subject to change.
- Please note that during the Festive Season (20 Dec – 6 Jan), there is a minimum three (3) night stay required.
- Exclusive Use: Fully exclusive use accommodates up to 16 people in 8 rooms per night. Regrettably, no additional beds or roll out beds are available.

Complimentary Guest Extras and Amenities:

- 24-hour Butler service
- Concierge services
- Swimming pool
- Lounge equipped with bookshelf, flat screen TV, Netflix and Multimedia centre
- Outdoor rooftop terrace
- Shower room facilities for early arrivals and late departures

Rates are inclusive of:

- All house beverages
- Accommodation
- WiFi
- Breakfast
- Dinner transfers within a 10km radius of the property between 17h00 - 24h00
- Afternoon tea / Canapes & cocktails (season dependent)



Special Promotions

Stay for 4 Pay for 3

Book 4 consecutive nights and only pay for the first 3 nights.

Valid for travel between **1 March 2026** and **28 February 2027**.

The above promotion excludes the Festive period defined as
20 December 2026 to 6 January 2027.

Cape Town and Sabi Sand

Book 3 nights at **Camissa House** and 4 nights at **Silvan Safari Lodge** and receive a free night from each property.

Valid for travel between **1 March 2026** and **28 February 2027**.

The above promotion excludes the Festive period defined as
20 December 2026 to 6 January 2027.

Returning Guests to Camissa House

We are valuing our returning guests back to Camissa House, by offering you a further 2% off RACK rates.

When booking, please quote the guest's name and mention 'returning guest' at the time of reservation.



Terms & Conditions

Special Promotions

- Special Promotions applies on all rooms, excluding Fully Exclusive use and it is not combinable or bookable in conjunction with other packages unless otherwise stated.
- The promotion to be applied must be specified at time of enquiry. If not requested and stipulated at time of reservation with Camissa House Reservations, the promotion will not be honoured.

Confirmation and Payment

- Provisional reservations will be kept for a maximum of 14 days.
- This reservation will depend on the availability of the selected rooms.
- The rates are quoted in South African Rands (ZAR) and do not include any Bank Charges or Foreign Currency Conversion fees.
- Banking fees and administrative fees (5%) will be deducted from all refunds.
- We require a written confirmation to secure the reservation within 14 days, as Camissa House reserves the right to cancel the reservation after this period.
- A 30% deposit is required within 7 days of confirmation of the reservation and the full amount is payable 30 days prior to arrival.
- During the Festive Season, defined as 20th December – 6th January annually, a 50% deposit is required to confirm the booking and the full amount is payable 30 days prior to arrival.
- The 30% deposit required for the Cape Town and Sabi Sand Promotion is non-refundable.
- A confirmation will be issued upon receipt of the deposit.
- Should you make a reservation within 30 days before arrival date, a 100% deposit is required.

Cancellation Policy

- Should you have confirmed a reservation in writing and cancelled earlier than 31 days before arrival, no cancellation fee will be charged.
- If the cancellation is made within 30 days, then the full amount is payable.
- Cape Town and Sabi Sand Promotion: Should you have confirmed a reservation in writing and cancelled earlier than 31 days before arrival, 30% of the full accommodation will still be charged.
- During the Festive Season, defined as 20th December – 6th January annually, the 50% deposit will be charged for the accommodation if the reservation is cancelled up to 61 days before the arrival date and the full amount if cancelled 30 days or less before arrival.
- In the case of early departure, the full duration of the booked stay will still apply.
- Refunds of deposits/prepayments for bookings are done at the discretion of management and are dependent on the availability of the rooms.

Child Policy

- We accept children over 12 years old at Camissa House.

Check In / Check Out Times

- Check-in time is 14:00. Every effort will be made to ensure the room is available upon arrival, however, should you wish to guarantee an early arrival, you would be required to book for an additional night prior to the scheduled arrival.
- Check-Out time is 11:00. Late check-out is subject to availability and can only be confirmed onsite on the day of departure. Should you wish to guarantee a late check-out, you would be required to book an additional night.



CAMISSA HOUSE | CAPE TOWN

Reservations Office: +27 (0)21 001 5885 | res@camissahouse.com

www.camissahouse.com



SILVAN
SAFARI

Rack Rates 2026 / 2027

Rack Rates 2026 / 2027

Room Types	No. of Units	Per Night	1 March 26 - 28 February 27
Suites	5	Per person per night	R 42 235
Family Suite	1	Per night	R 142 555
Exclusive Use	6	Per night	R 434 810

PLEASE NOTE:

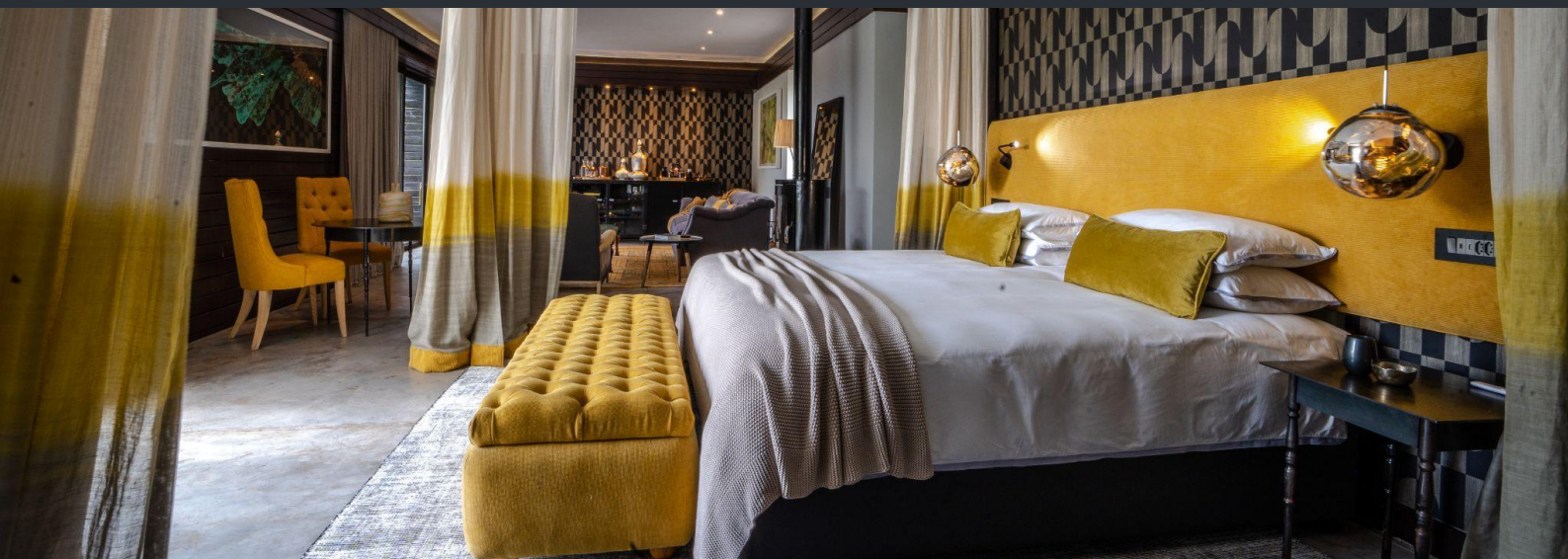
- Rates are quoted in South African Rand (ZAR), inclusive of Value Added Tax at 15% and subject to change.
- Single supplement surcharge of 25% on the per person sharing rate.
- Please note that during the Festive Season defined as 20 December to 6 January annually, there is a minimum three (3) night stay required.
- Exclusive Use: Fully exclusive use accommodates up to 14 people (Including children 12 years and older), in 6 suites including the Leadwood Family Suite, with private use of two Land Rovers.
- Please note, children 12 years and older pay full adult rates.
- Leadwood suite can accommodate a maximum of 4 guests.

Rates are inclusive of:

- Luxury accommodation
- Three gourmet meals per day
- Selected drinks
- Game drive refreshments and snacks
- Two game drives daily with a FGASA qualified guide
- WiFi
- Walking safaris
- Laundry
- Return road transfers between the Silvan Safari airstrip and the lodge

Rates exclude:

- Spa treatments
- Gratuities
- Curio shop purchases
- All transport to the Sabi Sand
- Sabi Sand / Kruger National Park entrance fees and conservation fees



Special Promotions

Stay for 4 Pay for 3

Book 4 consecutive nights and only pay for the first 3 nights at **Silvan Safari Lodge**.

Valid for travel between **1 March 2026** and **28 February 2027**.

The above promotion excludes the Festive period defined as **20 December 2026** to **6 January 2027**.

Cape Town and Sabi Sand

Book 4 nights at **Silvan Safari Lodge** and 3 nights at **Camissa House** and receive a free night from each property.

Valid for travel between **1 March 2026** and **28 February 2027**.

The above promotion excludes the Festive period defined as **20 December 2026** to **6 January 2027**.

Returning Guests to Silvan Safari

We are valuing our returning guests back to Silvan Safari by offering you a further 2% off RACK rates.

When booking, please quote the guest's name and mention 'returning guest' at the time of reservation.



Terms & Conditions

Special Promotions

Special Promotions applies on all suites, excluding Fully Exclusive use and it is not combinable or bookable in conjunction with other packages unless otherwise stated.

The promotion to be applied must be specified at time of enquiry. If not requested and stipulated at time of reservation with Silvan Safari reservations, the promotion will not be honoured.

Confirmation and Payment

- This reservation will depend on the availability of the selected suites.
- The rates are quoted in South African Rands (ZAR) and do not include any Bank Charges or Foreign Currency Conversion fees.
- Banking fees and administrative fees (5%) will be deducted from all refunds.
- We require a written confirmation to secure the reservation within 14 days, as Silvan Safari reserves the right to cancel the reservation after this period.
- A 20% non-refundable deposit is required within 14 days of confirmation of the reservation and the full amount is payable 60 days prior to arrival.
- During the festive season defined as 20th December - 06th January annually a 50% non refundable deposit is required to secure the booking, the full amount is payable 120 days prior to arrival.
- A confirmation will be issued upon receipt of the deposit.
- Should you make a reservation within 60 days before arrival date, a 100% deposit is required.

Cancellation Policy

- Should you have confirmed a reservation in writing and cancelled earlier than 61 days before arrival, 20% of the full accommodation will be charged.
- If the cancellation is made within 60 days, then the full amount is payable.
- During the Festive Season, defined as 20th December – 6th January annually, the fee is 50% of the accommodation if the reservation is cancelled up to 121 days before the arrival date and the full amount if cancelled 120 days or less before arrival.
- In the case of early departure, the full duration of the booked stay will still apply.
- Refunds of deposits/prepayments for bookings are done at the discretion of management and are dependent on the availability of the suites.

Child Policy

- We accept children over 12 years old at Silvan Safari.

Check In / Check Out Times

- Check-in time is 14:00. Every effort will be made to ensure the suite is available upon arrival, however should you wish to guarantee an early arrival, you would be required to book for an additional night prior to the scheduled arrival.
- Check-Out time is 11:00. Late check-out is subject to availability and can only be confirmed on-site on the day of departure. Should you wish to guarantee a late check-out, you would be required to book an additional night.





SILVAN SAFARI | SABI SAND

Reservations Office: +27 (0)21 001 5880 |
res@silvansafari.com

www.silvansafari.com